



sauchiehall st.

GLASGOW

# 67 81

sauchiehall st.



67-81 Sauchiehall Street, Glasgow comprises the former BHS department store with floor-plates of between 15,000 sq. ft and 20,000 sq. ft over Ground, basement and 1st Floors which can be sub-divided to suit specific size requirements.

## SAUCHIEHALL ST.





Glasgow, Scotland's largest city, has an estimated shopping catchment of around 2.25 million within a 45 minute drive time and is widely recognised as the UK's premier shopping destination after London's West End. 67 – 81 Sauchiehall Street forms part of Glasgow's 'Golden Z' retail core and is one of the prime retail thoroughfares in the city centre. The property occupies an excellent location between Primark, TK Maxx and Boots to the west, and Buchanan Galleries and Buchanan Street to the east.

**2.25  
Million**  
CATCHMENT AREA

**GLASGOW'S  
'Golden Z'**  
RETAIL CORE LOCATION

Nearby occupiers include Poundland, McDonalds, Jollibee, KFC, Savers, and EE.



# Location





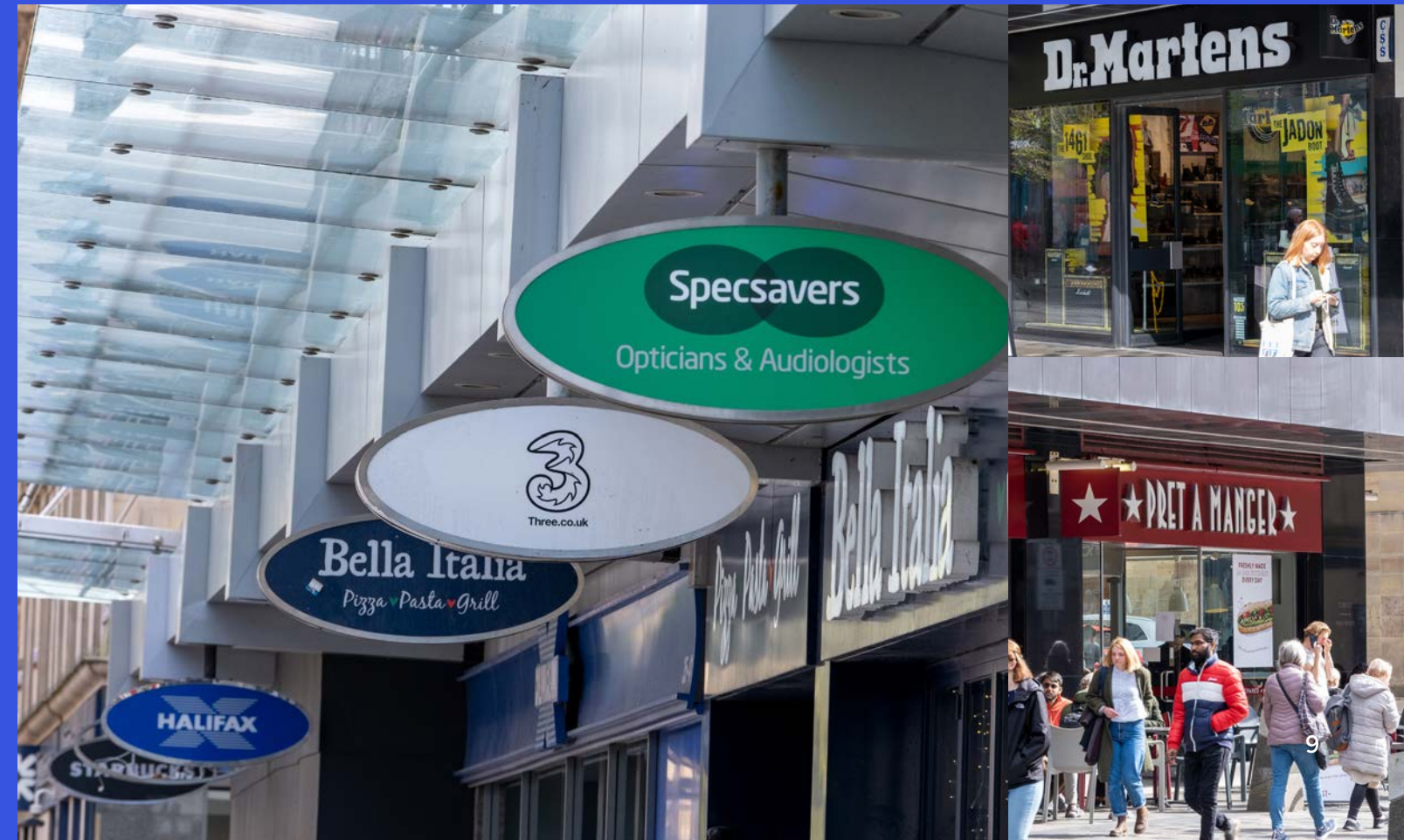
# Opportunity



Fantastic high footfall city centre location offering flexible unit size options and configurations to suit retail and leisure occupiers.

Situated on one of the premier retailing streets in Glasgow and also on the bar-restaurant circuit and close to offices.

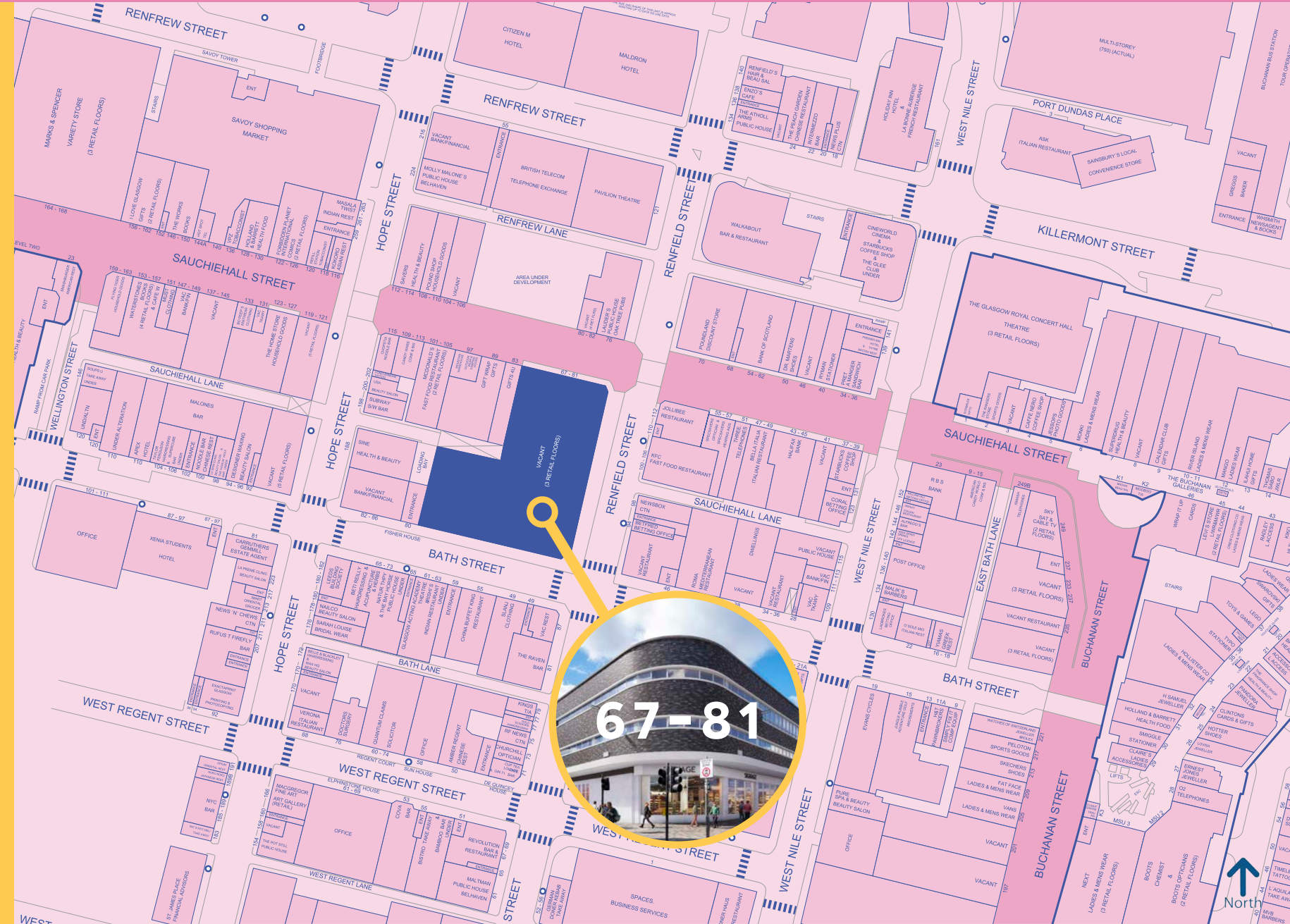
Would suit retail, F&B, competitive socialising, and gyms, amongst other uses.





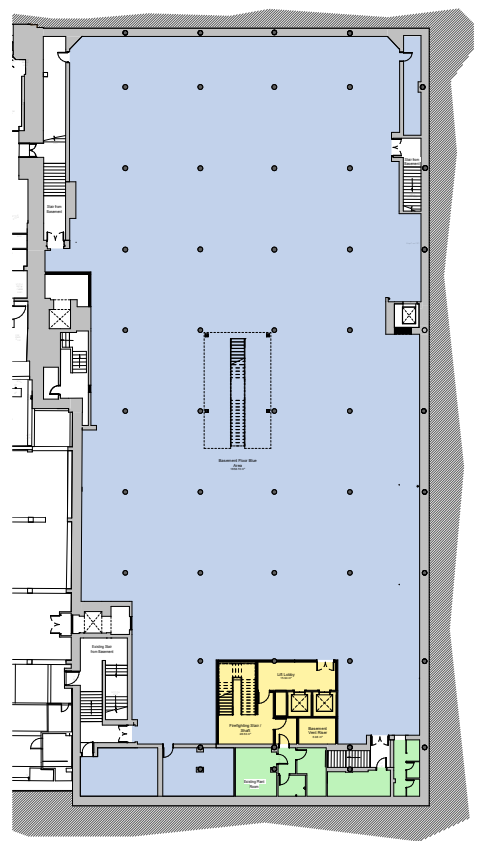
# Glasgow City Centre

67  
81

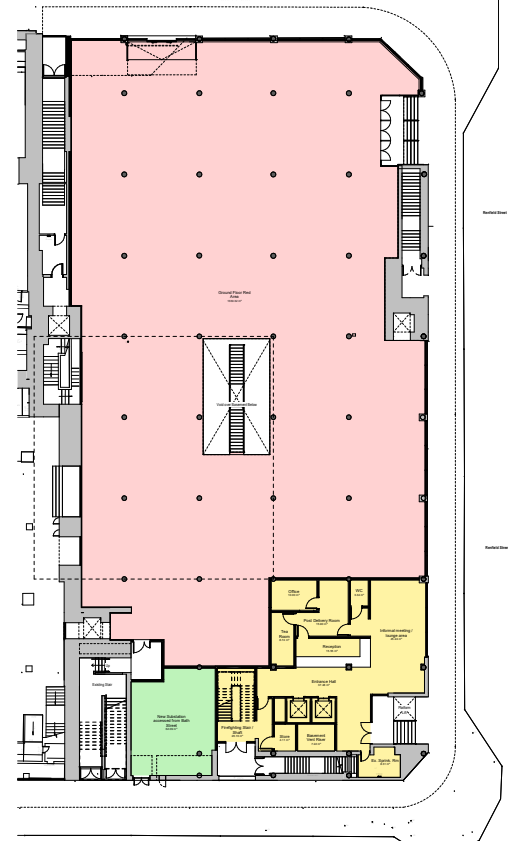


# 67-81 Floor Plans

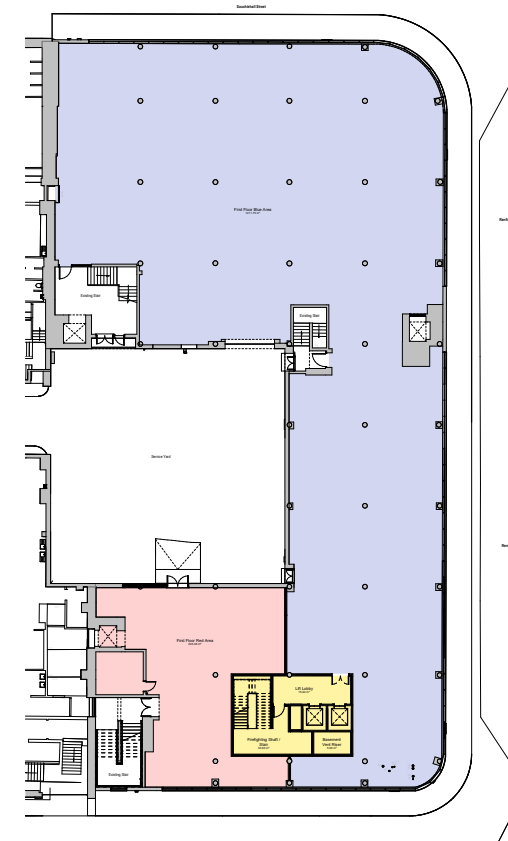
67  
81



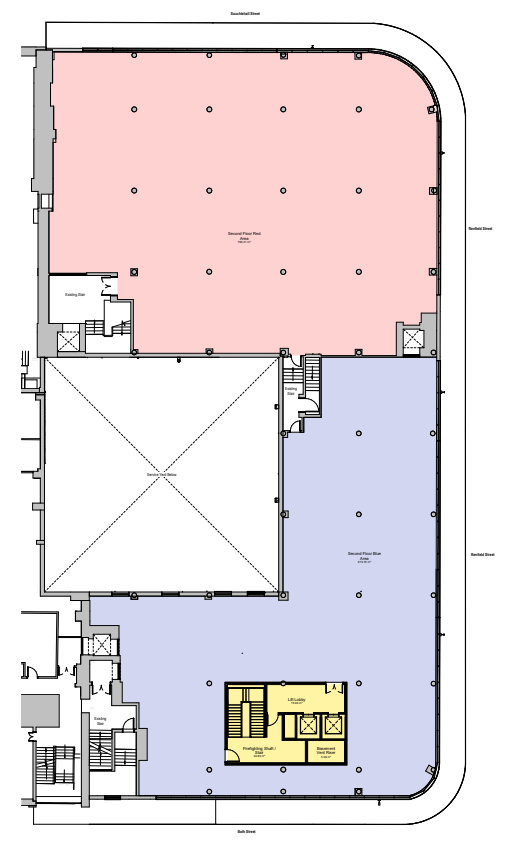
**BASEMENT LEVEL**  
CIRCA 1,660 SQ.M / 17,868 SQ.FT  
(Blue area usable floor area)



**GROUND FLOOR**  
CIRCA 1,340 SQ.M / 14,424 SQ.FT  
(Red area usable floor area)



**FIRST FLOOR**  
CIRCA 1,415 SQ.M / 15,231 SQ.FT  
(Blue and Red usable floor areas combined)



**SECOND FLOOR**  
CIRCA 1,412 SQ.M / 15,199 SQ.FT  
(Blue and Red usable floor areas combined)



Further information available  
from the joint advisors:

**Stuart Moncur**  
Savills  
[stuart.moncur@savills.com](mailto:stuart.moncur@savills.com)  
07887 795 506

**David Simmons**  
HSA Retail  
[david.simmons@hsaretail.com](mailto:david.simmons@hsaretail.com)  
07739 590 858

67  
81  
sauchiehall st.

**HSA**  
RETAIL

savills







[WWW.FORMALINVESTMENTS.COM](http://WWW.FORMALINVESTMENTS.COM)

**IMPORTANT NOTICE / MISREPRESENTATION ACT**

Formal Investments, their clients and any joint agents give notice that: 1. They are not authorised to make or give any representations or warranties in relation to the property either here or elsewhere, either on their own behalf or on behalf of their client or otherwise. They assume no responsibility for any statement that may be made in these particulars. These particulars do not form part of any offer or contract and must not be relied upon as statements or representations of fact. 2. Any areas, measurements or distances are approximate. The text, images and plans are for guidance only and are not necessarily comprehensive. It should not be assumed that the property has all necessary planning, building regulation or other consents and Formal Investments have not tested any services, equipment or facilities. Purchasers must satisfy themselves by inspection or otherwise. 3. Date of publication April 2022.

Statistics – 2019